

SAE Technical Board rules provide that "All technical reports, including standards approved and practices recommended, are advisory only. Their use by anyone engaged in industry or trade is entirely voluntary. There is no agreement to adhere to any SAE standard or recommended practice, and no commitment to conform to or be guided by any technical report. In formulating and approving technical reports, the Board and its Committees will not investigate or consider patents which may apply to the subject matter. Prospective users of the report are responsible for protecting themselves against liability for infringement of patents."

THIS DOCUMENT HAS BEEN REAFFIRMED TO COMPLY WITH THE SAE 5-YEAR REVIEW POLICY.

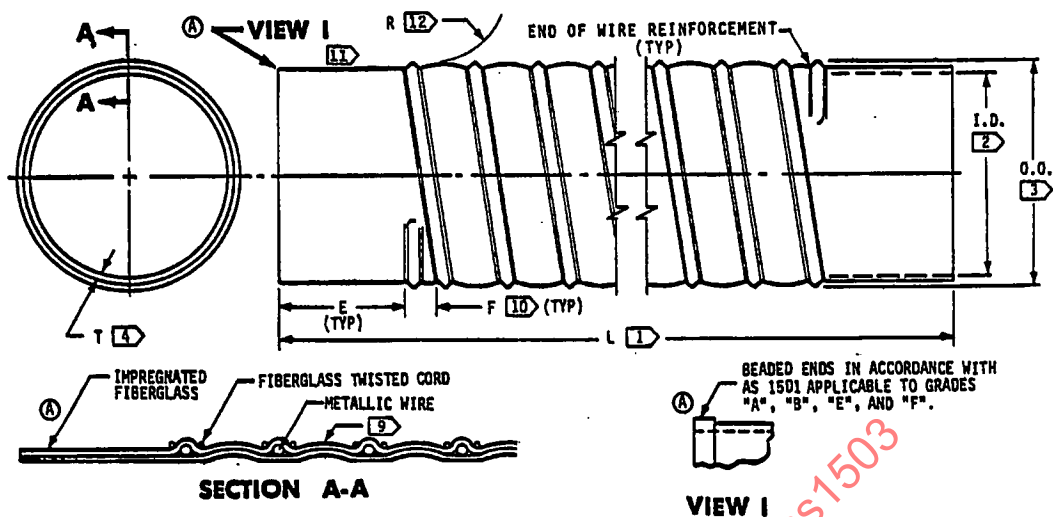


TABLE I

① TABULATION OF OPERATING PRESSURE AND PART NUMBER GRADES ⑤

GRADE	TYPE (OPERATING TEMPERATURE)	OPERATING PRESSURE RATING (PSI) (5 PSI NEGATIVE TO POSITIVE PRESSURE LISTED BELOW) /5/											
		HOSE INSIDE DIAMETER (INCHES)											
		1	2	3	4	5	6	7	8	9	10	11	12
A ⑥	I	44	30	22	16	12	10	8	6	5	4	3	3
B ⑥	II												
C ⑦	I	22	15	11	8	6	5	4	3	2	2	2	2
D ⑦	II												
E ⑧	I	75	50	40	30	25	20						
F ⑧	II												

TABLE II

① TABULATION OF HOSE LENGTH SPECIFICATIONS

I.D. HOSE INSIDE DIAMETER (INCH)	L- HOSE LENGTH (INCHES)			E SOFT END LENGTH INCHES±0.12	F WIRE TERMINATION LENGTH (MAX.) (INCH)
	GRADES A, B, E, & F MINIMUM	GRADES "C" AND "D" MINIMUM	ALL GRADES MAXIMUM		
0.75 TO 1.75	5.25	4.50	120.00	1.50	0.50
2.00 TO 12.00	6.00	5.00	180.00	1.50	0.75

TABLE III

① TABULATION OF AVAILABLE HOSE LENGTH, INCREMENTS AND TOLERANCES

L- HOSE LENGTH (INCHES)	AVAILABLE LENGTH INCREMENT (INCH)	L- HOSE LENGTH TOLERANCE (INCH)
5.00 TO 36.00	0.25	±0.12 OR 1% IF GREATER
36.50 TO 60.00	0.50	±1%
61.00 TO 180.00	1.00	±1%

SHEET	1	2
REV.	A	A

SHEET COMPLETELY REVISED

CUSTODIAN: SAE G-3/G-3D

PROCUREMENT SPECIFICATION: AS 1501

**SAE Aerospace**  
An SAE International Group

### AEROSPACE STANDARD

HOSE, AIR DUCT, FLEXIBLE, HELICAL METALLIC WIRE,  
SUPPORTED (COVERED) SELF EXTINGUISHING

# AS1503

SH 1